

Restoring and stimulating cognitive and physical abilities during an authentic tourism experience



Living "La dolce vita" in Piemonte, uncovering the history, culture, nature, food, and vineyards of a stunning wonderland of World Heritage.

TOURISM

Piemonte and its beauty A never ending discovery

Food&Wine

Nature&Sport

Shopping

Art&Culture

GRUPPOCIDIMU

CIDIMU S.p.A.
Centro Italiano di Diagnostica Medica Ultrasonica

We are a 35 year old group of Medical Institutes specializing in rehabilitation, healthcare, and diagnostics. We stand apart by offering the highest level of professional quality in accurate and individualized care, tailor-made for each patient. We have charming, modern, and highly advanced facilities for a relaxing and unique medical stay.

www.stateofholidays.com

A new generation of holiday travel

An exceptional combination of Medical Care and Tourism for results oriented vacations.

The best return on your holidays

HEALTHCARE

Cutting edge rehabilitation and diagnostic technologies for a world class and highly professional experience that enhances both motor and cognitive abilities.

Your our **CONDITION CONCERN**

A health-mindful holiday vacation harmonized with a few hours of wellness care per day.

4 packages for different needs and expectations.



State of **MIND**



By directly stimulating specific areas of the brain, standard rehabilitation practices are now achieving previously unthinkable results.

The mind-brain system is the most complex mechanism in our body. Each area of the brain is integrated with other regions to control specific bodily functions. Neurons communicate with each other through electrical and chemical impulses to form complex neural networks that guarantee the proper functioning of our marvelous human machine. When something upsets or damages this process it doesn't mean that all is lost. Our objective is to offer thoroughly customizable care, using the most state of the art technology, while taking full advantage of the recovery opportunities afforded by cerebral plasticity.

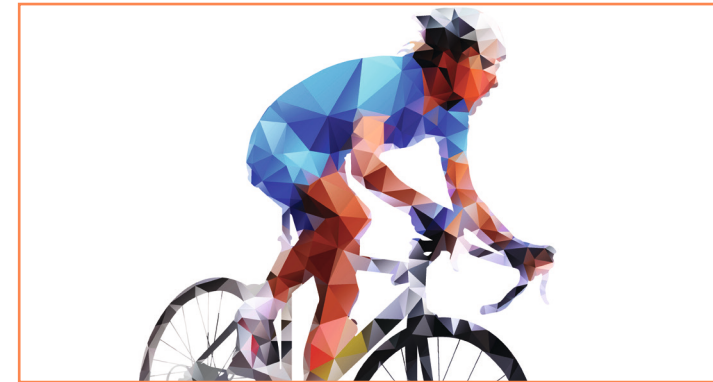
State of **BODY**

The best in rehabilitative treatment for orthopedic, neurological, vascular, cardio-respiratory and many other pathologies. We use advanced technology, backed by multi-specialist teams who construct completely personalized procedures to achieve the best recoveries possible. Our rehabilitation methods focus on motor and/or functional abilities which have been reduced or lost due to disease or trauma.

Also of great importance is the maintenance and recovery of those functions that are weakened through aging and/or chronic conditions. Examples include arthritis, back pain, chronic and acute tendinitis, acute joint and muscular conditions, fractures and bruising, post-prosthetic rehabilitation, post-surgical pain, severe and degenerative neurological pathologies, and cardio-respiratory rehabilitation, which has proven particularly effective.



State of **PERFORMANCE**



No matter the level, sports performance doesn't depend on physical training alone.

The best results are accrued through mind-body synergy. Our institutes—certified by the FIMS (International Federation of Sports Medicine) with CCSM (Collaborating Center of Sports Medicine) recognition—are able to enhance distinct physical abilities by targeting specific areas of the brain with the latest cutting-edge technology.

Beyond providing advanced rehabilitative care, we offer performance enhancement training to the world's top professional athletes. Treating an athlete is not like treating ordinary patients. That's why our approach is fully customized, utilizing top of the line medical specialists and the most innovative diagnostic technologies to examine and enhance athletic efficacy.

State of **CHECK-UP**

Thorough, noninvasive, diagnostic tests to recognize diseases in their early stages of development, while they're still capable of being cured.

We conduct the most specific, fine-tuned examinations, primarily aimed at identifying anomalies that can lead to disease and the early diagnosis of metabolic, cardiovascular, cancerous and degenerative pathologies.

Each "Full Check-Up" is customized according to genetic, environmental and lifestyle predilections so that additional tests can be arranged based upon diagnostic analysis.

Patients receive the complete exam results, and a detailed report concerning any potential diseases or risk factors that need to be corrected. In the event of a positive diagnosis we provide patients with the necessary counsel for treatment.

